



ALAMEDA COUNTY TRANSPORTATION COMMISSION

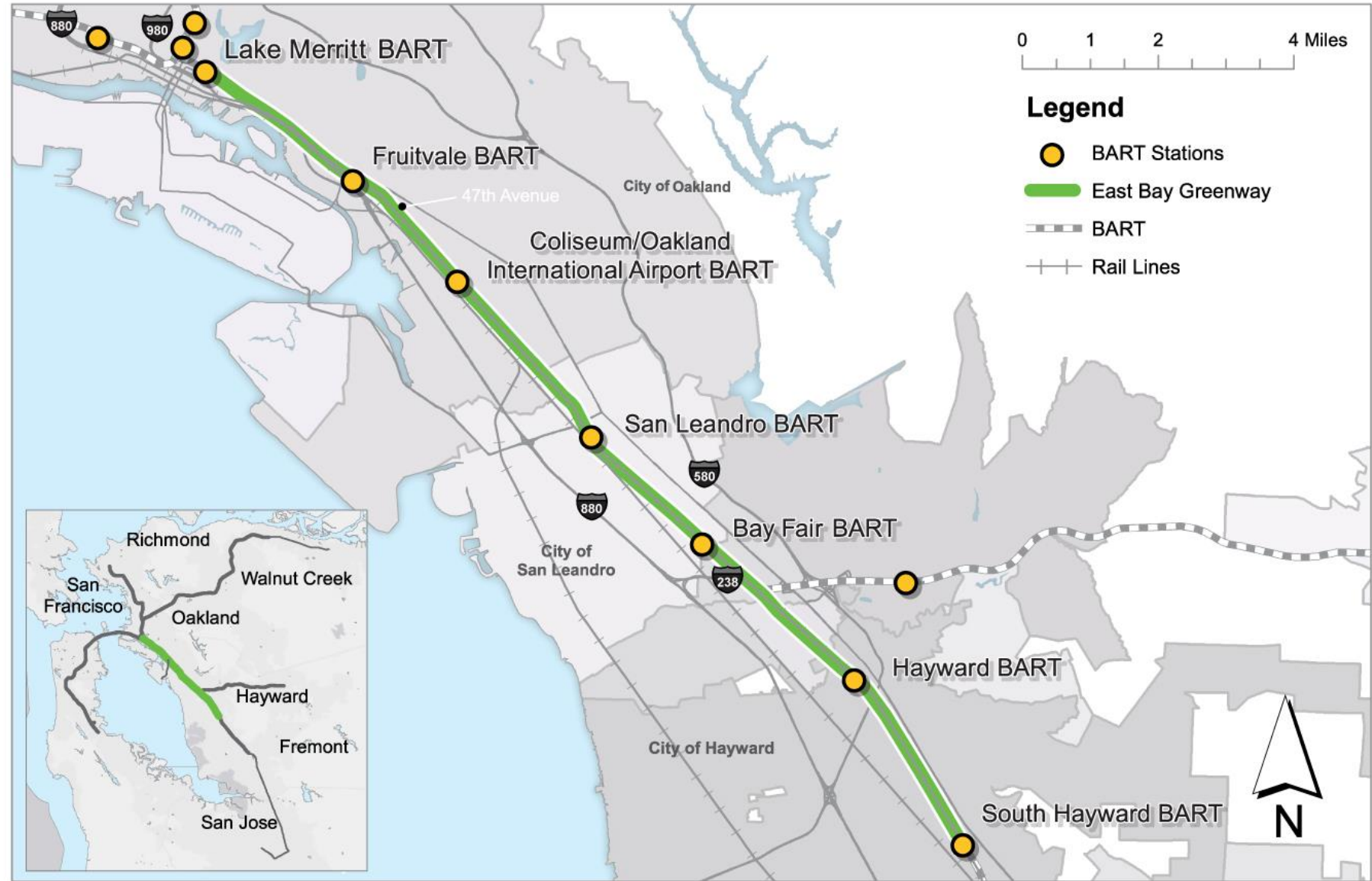
# East Bay Greenway

(Lake Merritt to South Hayward BART)

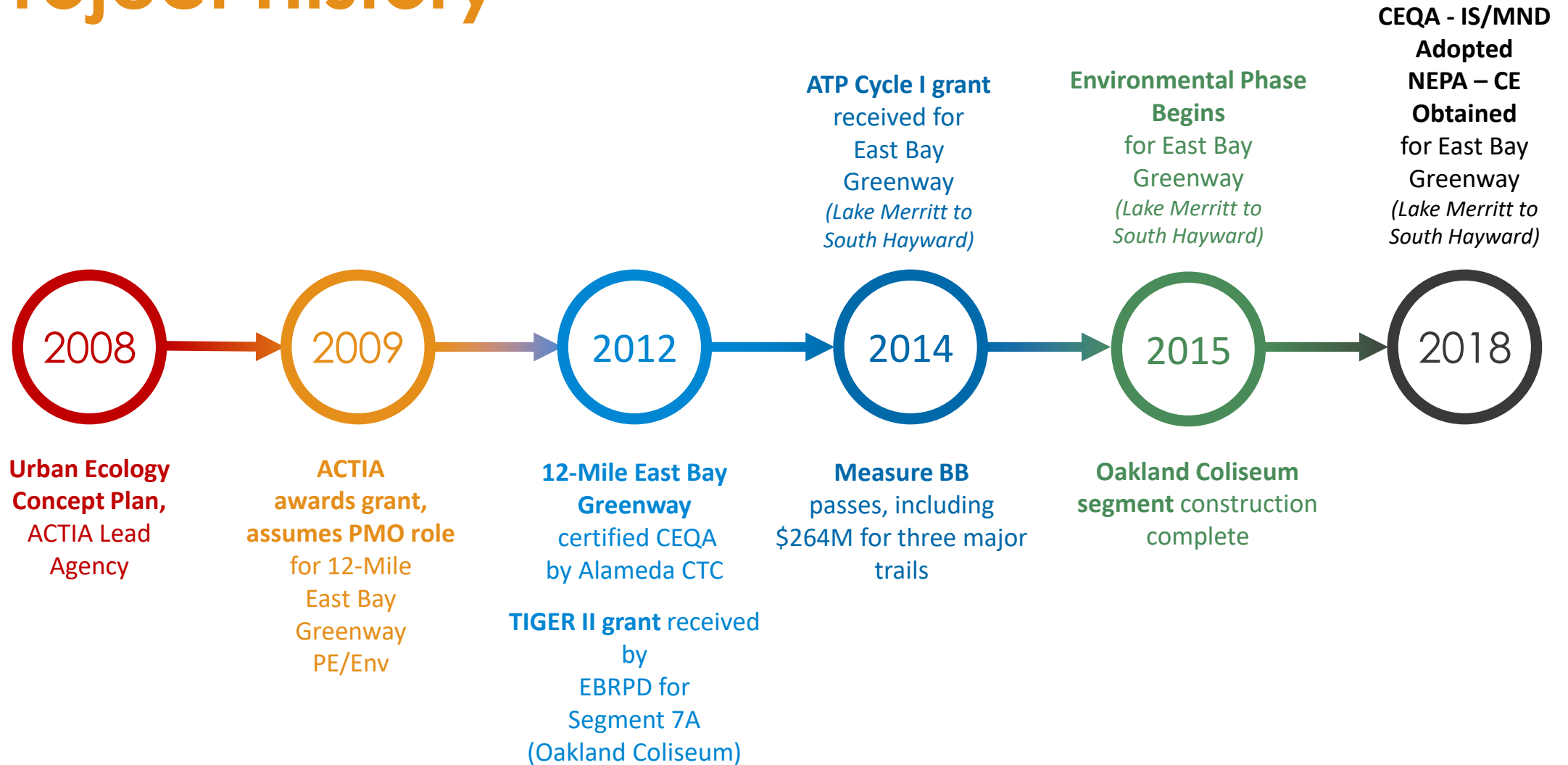


# Overview

- 16 Mile Corridor
- Connects 7 BART Stations
  - Class I and Class IV facilities
- Provides modernized bicycle and pedestrian crossings at streets



# Project History



# Both concepts



Environmental Clearance  
Footprint



BART



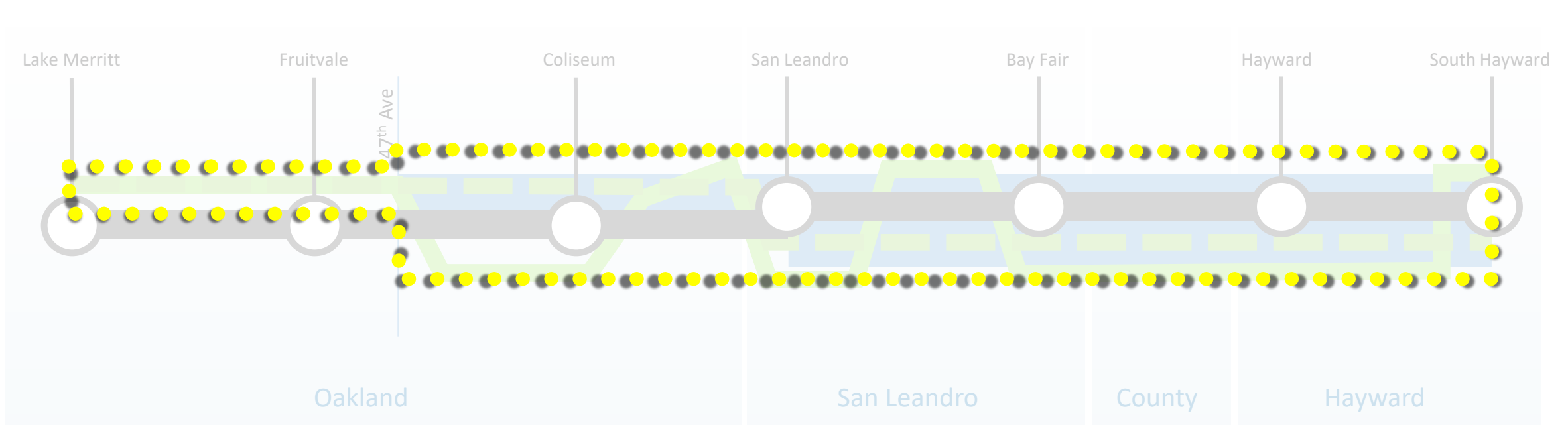
UPRR



Rail-to-Trail

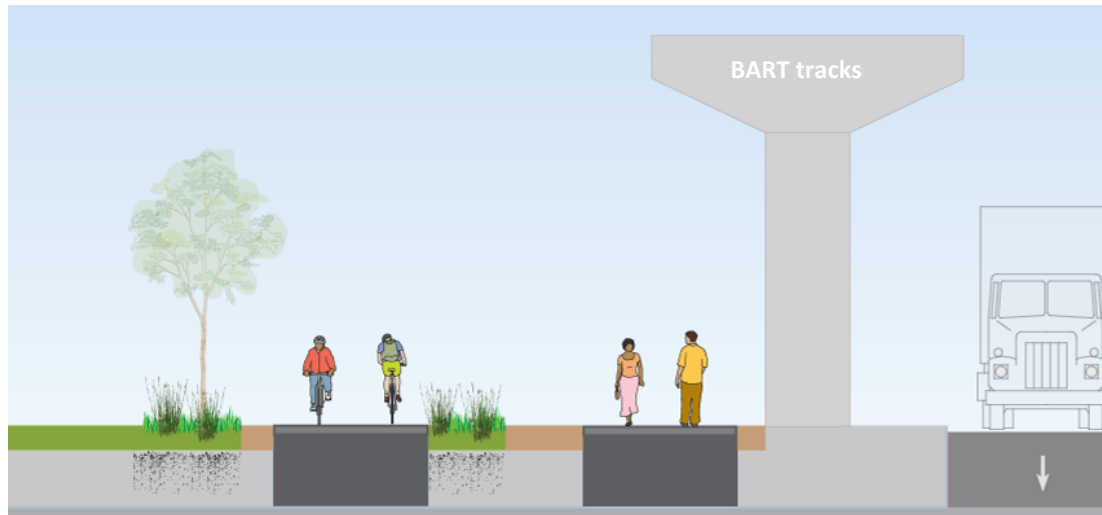


Rail-with-Trail



## Rail-to-Trail

(using **full** railroad right-of-way)

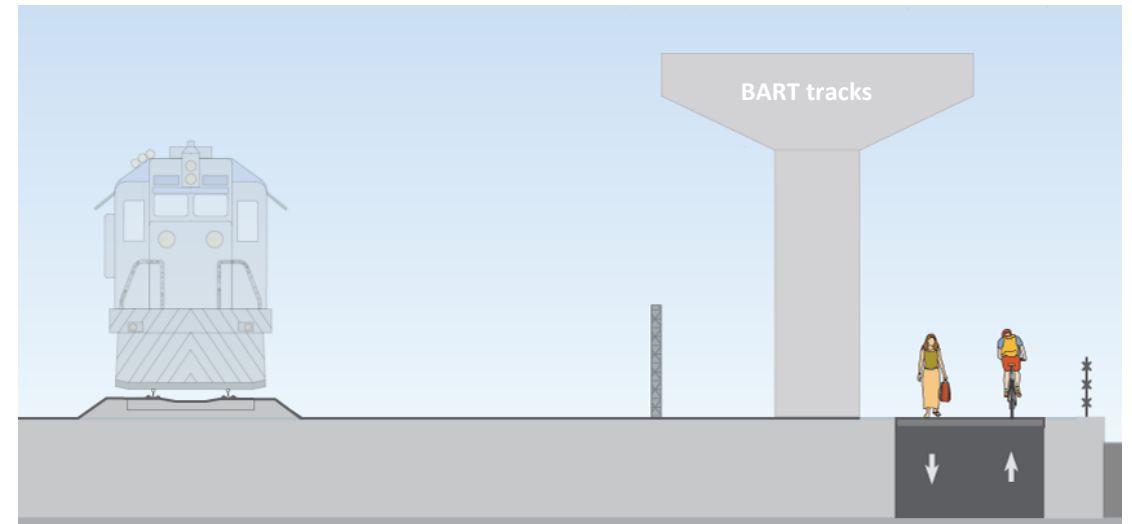


Railroad right-of-way

Environmental Clearance Footprint

## Rail-with-Trail

(**limited** railroad right-of-way available)

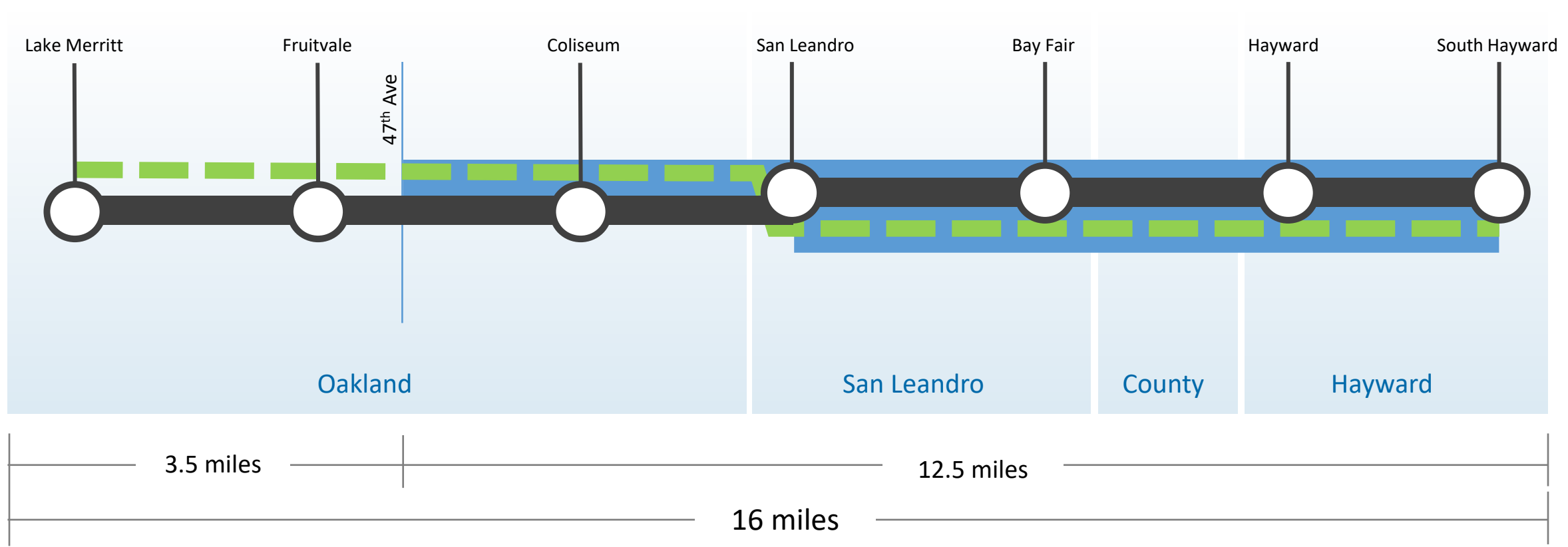


Railroad right-of-way

Environmental Clearance Footprint

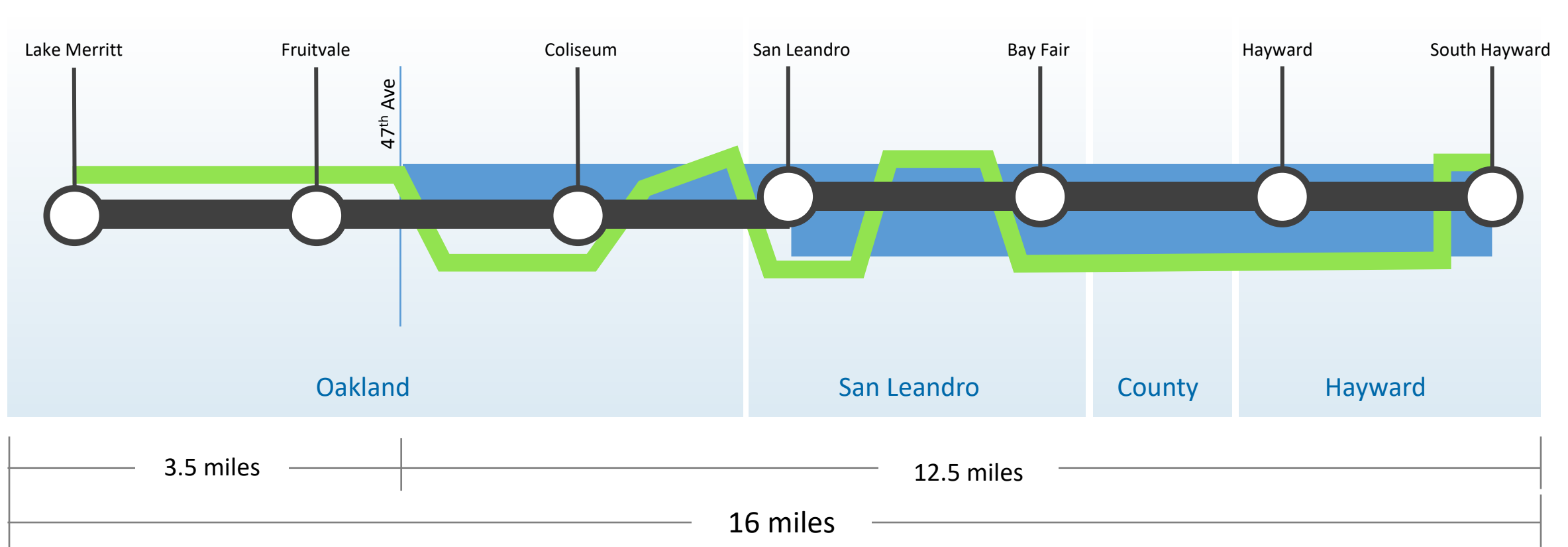
# Rail-to-Trail Concept

■ BART    ■ UPRR    ■ Rail-to-Trail



# Rail-with-Trail Concept

■ BART    ■ UPRR    ■ Rail-with-Trail



# Future Phases





# Design Aesthetic Document

## Urban Design Elements #1: Lighting, Fencing, Color

### Lighting

Project-wide Guidance

Pathway Lights

Branded Greenway or Jurisdiction-specific

Roadway Lights



### Fencing

Types by Location

Rail Fence

Branded Greenway or Jurisdiction-specific

Welded Wire

Chain Link

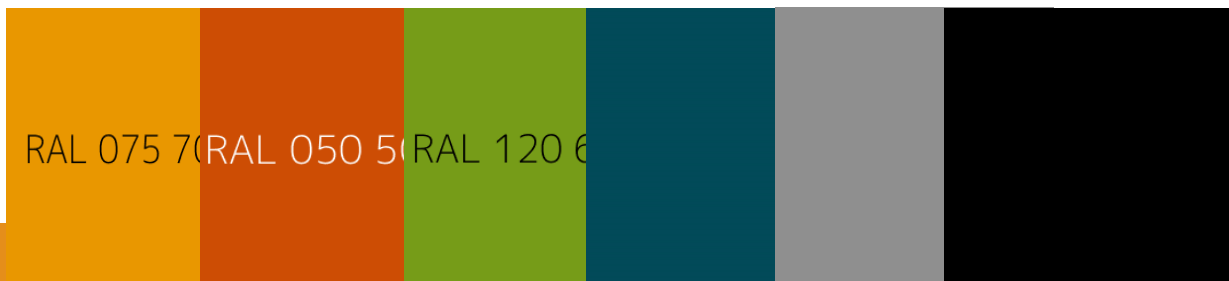
Other



### Color

Branded Greenway or Jurisdiction-specific

Color Selection



EAST BAY GREENWAY

A1: This or similar



A2: This or similar



B. Jurisdiction standard Pathway light pole and luminaire with consistent Greenway color— Review of Oakland’s Street Light Design Manual and other agency standard lighting details available on the internet, it appears there is no one consistent light across all jurisdictions. It is unclear if all jurisdictions have a standard pathway or pedestrian light. Jurisdictions use their own pathway light standard, but they would be colored the same along the Greenway to provide a consistent appearance along the project.

C. Roadway light pole and luminaire – if new roadway lighting is needed, it should follow each jurisdiction’s standard along that street segment.

*Design Options include:*

- A. Conform to Segment 7A design (San Leandro Street from 75<sup>th</sup> Street to 85<sup>th</sup> Street, in Oakland).



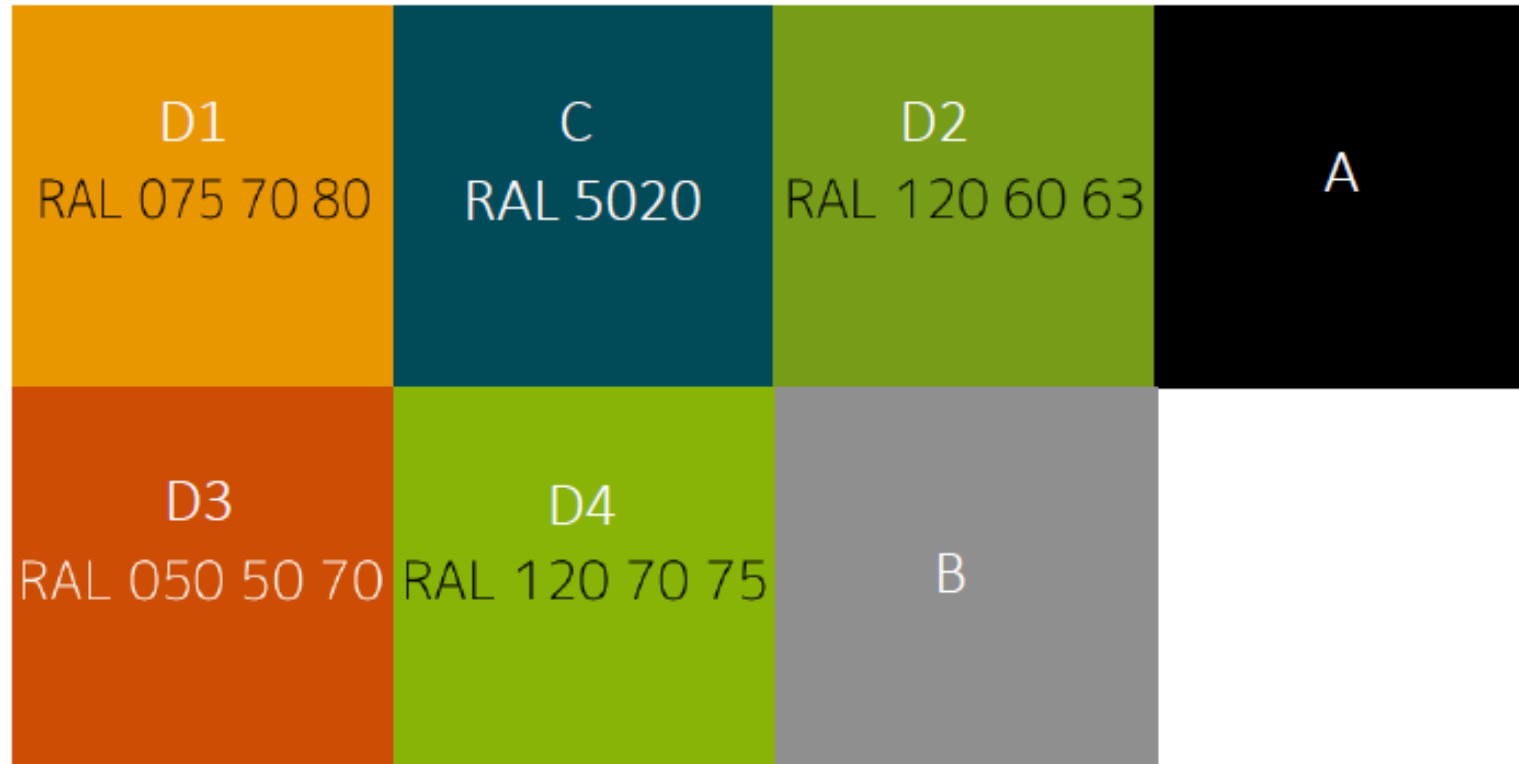
*Existing rail fence along Segment 7 A.*

- B. Use Segment 7A design that includes a shorter railing panel (with or without a different design pattern) placed at intervals to provide greater interest and rhythm along street. The shorter panels could be city or district themed. Adjacent is example of varying railing panel lengths:



- A. Use typical standard color – Black
- B. Use typical standard color – Gray (note: each manufacturer has their own standard gray color)
- C. Use Segment 7A color (San Leandro Street from 75<sup>th</sup> Street to 85<sup>th</sup> Street, in Oakland) – Teal Green
- D. Use a Greenway corridor-wide unique color. Below are some potential curated colors; these or other jurisdictional preference could be used. D1 – Yellow Orange, D2 – Dark Lime Green , D3 – Vermillion, D4 –Lime Green.

Potential unique color options include (lettered to match above):



**A.** Each jurisdiction uses wayfinding signage that follows their guidance documents or if no guidance exists, is designed by the jurisdiction, and has the East Bay Greenway logo as an individual sign placed above it.



**B.** Use a single wayfinding sign that combines a Greenway-specific logo with wayfinding information that is used along the Greenway consistently across all jurisdictions.



# Design Aesthetic Document - Recap

## Urban Design Elements #2: Wayfinding Signage, Amenities, Walls & Bridges

### Wayfinding Signage

East Bay Greenway Logo and Signage Style  
Pole/Post Mounted  
Pavement Applied  
Interpretive



### Trail Amenities

Seating  
Trash/Recycling Receptables  
Other



### Retaining Walls, Bridges and Ramps

Retaining Walls  
Pedestrian and Bicycle Bridges and Associate Ramps



# Design Aesthetic Document

## Urban Design Elements #3: Hardscape, Landscape, and Green Infrastructure

### Hardscape

Hardscape Features in Public ROW

Existing Character

Greenway Character

Trail Treatment within/outside of Public ROW



### Landscape

Landscape Features in Street ROW

Landscape Features outside Street ROW

Plant Materials and Placement



### Green Infrastructure

General Guidance

Types and Usage



# Design Aesthetic Document - Recap

## Urban Design Elements - *Feedback Received*

### Branding

Consistent, modern look  
Branded Trail Logo



### Color

Green to tie in to “Greenway”

### Style

Good-looking, not just utilitarian  
Equitable with other regional trail facilities

### Lighting

Follow street lighting style in use by each jurisdiction  
Consistent pathway lighting style  
LED





# Questions