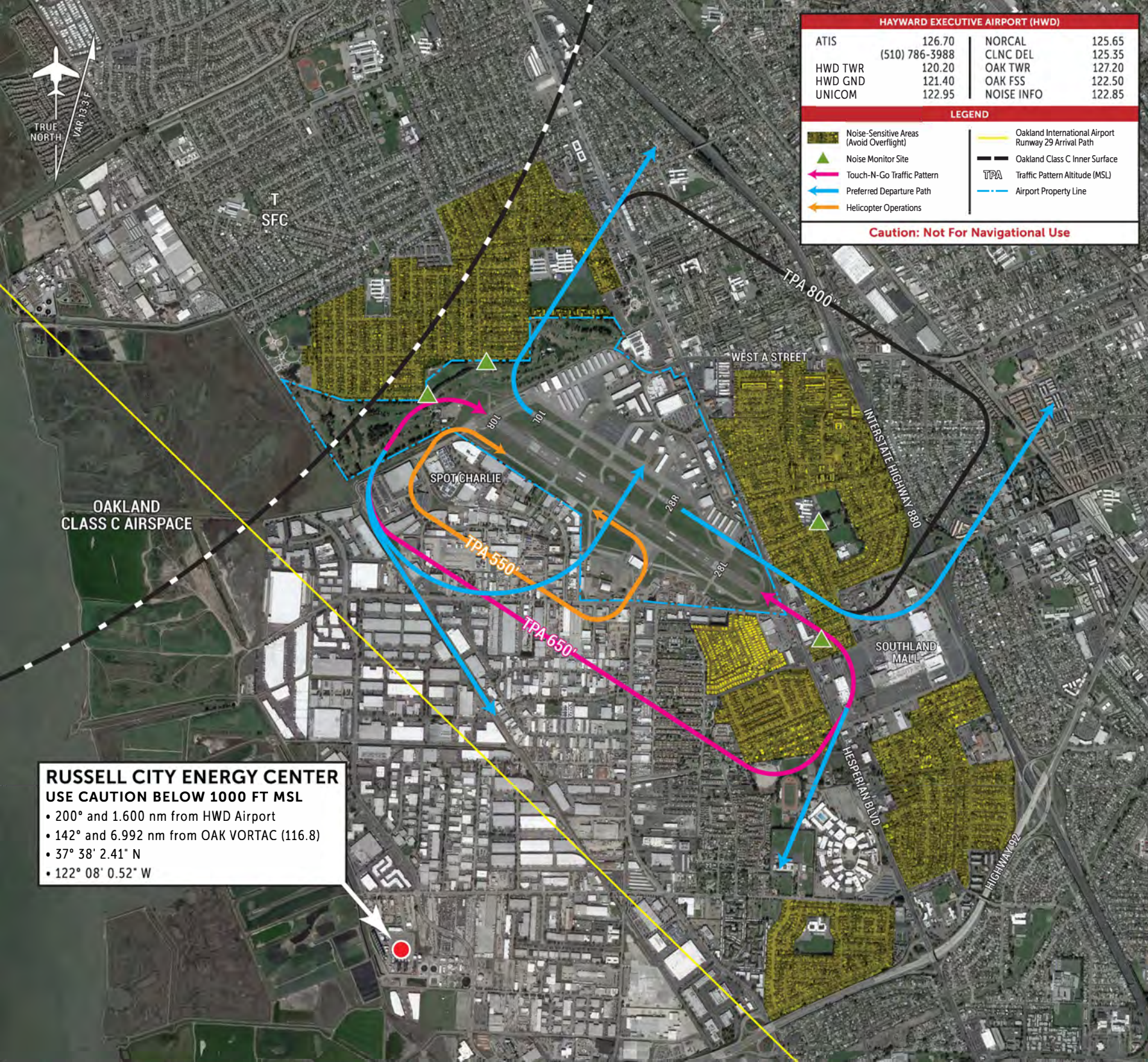


# HAYWARD EXECUTIVE AIRPORT VOLUNTARY NOISE ABATEMENT AND OPERATIONAL PROCEDURE GUIDE

HAYWARD EXECUTIVE AIRPORT (HWD)			
ATIS	126.70	NORCAL	125.65
	(510) 786-3988	CLNC DEL	125.35
HWD TWR	120.20	OAK TWR	127.20
HWD GND	121.40	OAK FSS	122.50
UNICOM	122.95	NOISE INFO	122.85
LEGEND			
	Noise Sensitive Areas (Avoid Overflight)		Oakland International Airport Runway 29 Arrival Path
	Noise Monitor Site		Oakland Class C Inner Surface
	Touch-N-Go Traffic Pattern		TPA Traffic Pattern Altitude (MSL)
	Preferred Departure Path		Airport Property Line
	Helicopter Operations		
<b>Caution: Not For Navigational Use</b>			



**RUSSELL CITY ENERGY CENTER**  
 USE CAUTION BELOW 1000 FT MSL

- 200° and 1.600 nm from HWD Airport
- 142° and 6.992 nm from OAK VORTAC (116.8)
- 37° 38' 2.41" N
- 122° 08' 0.52" W

## Runway 10L

- Closed 2100 to 0700 local hours

## Runway 28R

- Closed 2100 to 0700 local hours
- NO straight-out departures
- Turn right before golf course
- Right crosswind departure restricted below 1500' MSL East of Three Crosses landmark

## Runway 28L

- Request a left 270° turn to the North instead of a right 90° turn to the North on departure (see chart)
- No straight-out departures
- Preferred runway for Touch & Go and Stop & Go activities
- Depart from Taxiway A1 or Z1 blast fence
- Right crosswind departure restricted below 1500' MSL East of Three Crosses landmark

## Helicopter Operations

- Maintain traffic pattern over industrial area southeast of Runway 10R-28L at or below 500' MSL
- Use Spot Charlie for autorotation and landing training

## Touch & Go and Stop & Go Operations

### • Runway 10R-28L

- Touch & Go and Stop & Go procedures prohibited between 2100 and 0700 hours Monday through Saturday and 2100 hours and 1000 hours on Sundays and/or holidays

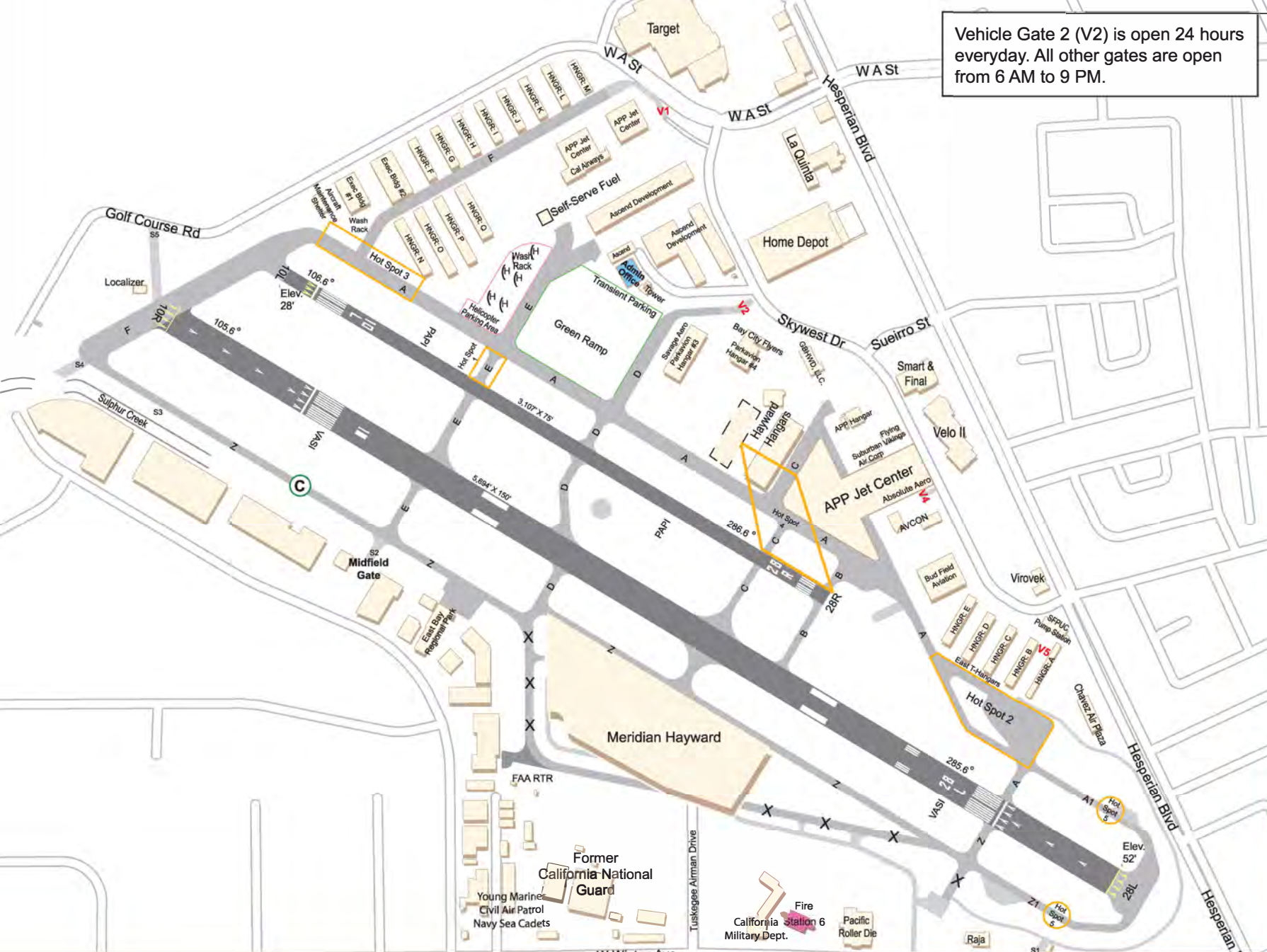
### • Runway 10L-28R

- Touch & Go and Stop & Go procedures prohibited between 0700 and 1000 hours on Sundays and/or holidays
- All other times not recommended



Please avoid prolonged flight at low altitudes over NOISE SENSITIVE AREAS (shaded in yellow), unless prevented by weather, air traffic control instructions or safety reasons.





Vehicle Gate 2 (V2) is open 24 hours everyday. All other gates are open from 6 AM to 9 PM.

## FREQUENTLY REQUESTED NUMBERS

Hayward Airport Toll Free Number (CA)	(800) 286-5444
Hayward Airport Security- After Hours	(510) 385-1104
Hayward City Hall	(510) 583-4000
ASOS Lighting Mx	(800) 242-8194
ATIS (Automated Terminal Information System)	(510) 786-3988
East Bay Regional Park District (Police Helicopter)	(510) 544-3010
- Public Safety Headquarters 24-Hr	(510) 881-1833
FAA CONTROL TOWER - OAK (FAA FSDO)	(510) 748-0122
National Weather Service, (Monterey)	(831) 656-1725
Noise Information Hot Line- Hayward Airport	(510) 293-8692
Noise Complaint Line - Oakland Airport	(510) 563-6463
NOTAMs (clearances & NOTAMS)	(877) 487-6867
OAK FSS - Flight Plans & Weather	(800) 992-7433
OAK FSDO - Pilot Certification	(510) 748-9559
Police Department (non-emergency)	(510) 293-7000



Hayward Executive Airport strives to be a good neighbor and has established a noise abatement program to assist pilots in operating their aircraft in the quietest manner possible. The noise abatement procedures detailed in this guide are intended to avoid any unnecessary overflights of residential areas. Pilots are encouraged to comply with these procedures unless deviations are made necessary by weather, air traffic control instructions, an in-flight emergency, or other safety considerations.

While the aircraft noise ordinance allows fines and penalties for violating the ordinance, the noise abatement program for Hayward Executive Airport focuses on pilot education when violations of the noise ordinance occur.

**BE A GOOD NEIGHBOR.....FLY QUIET**



20301 Skywest Drive, Hayward, CA 94541  
 (510) 293-8678 | [www.haywardairport.org](http://www.haywardairport.org)  
 Noise Information Hotline (510) 293-8692

**BE A GOOD NEIGHBOR.....FLY QUIET**

HWD  
HWD  
HWD