

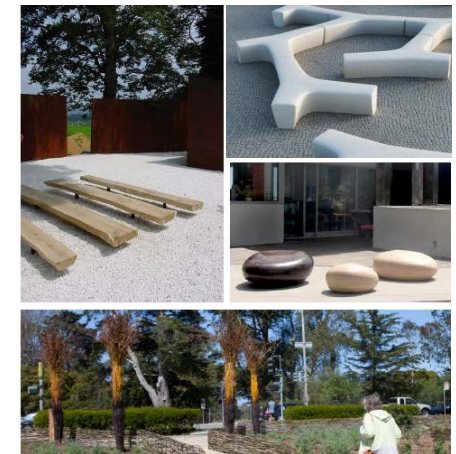
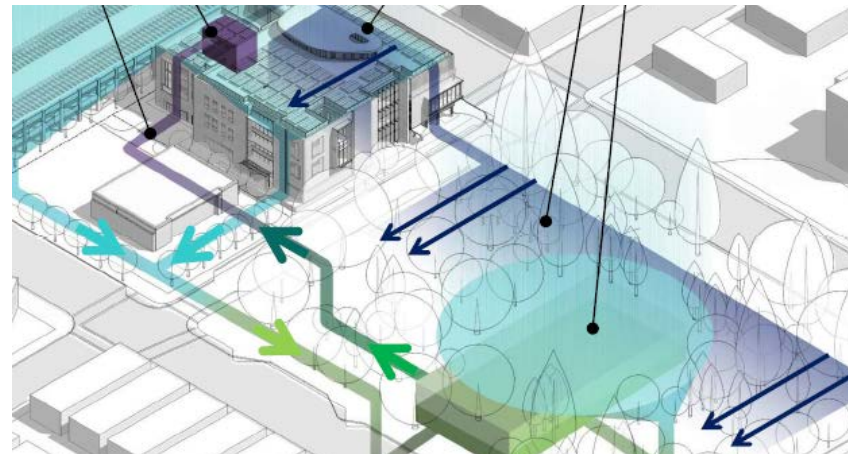
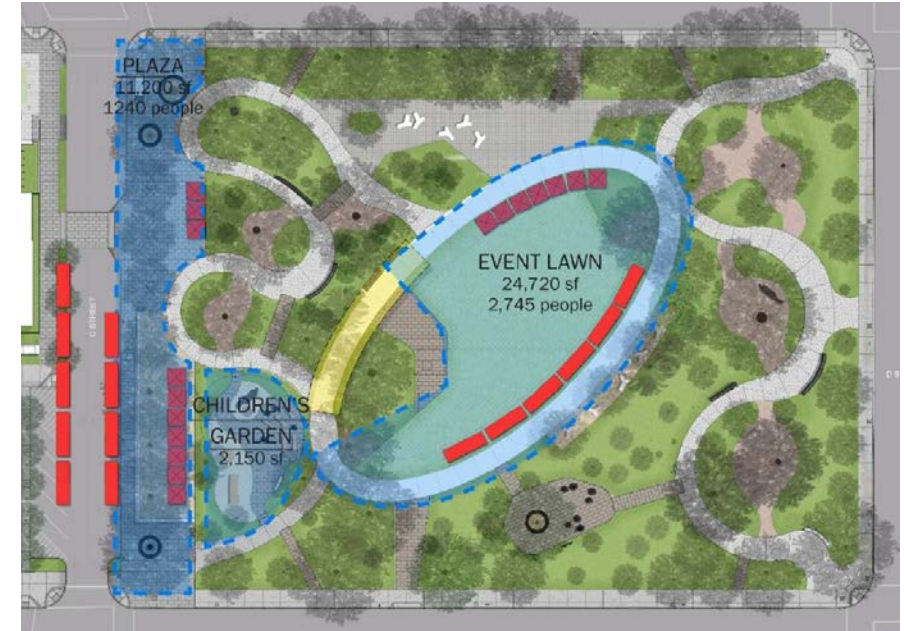
An aerial view of a park plan for Heritage Plaza. The plan shows a central green lawn area, several circular paved walkways, and various landscaping elements like trees and shrubs. A prominent yellow highlighted path runs diagonally across the central lawn area. The entire image is overlaid with a semi-transparent dark green filter.

# Update on the Heritage Plaza

July 2, 2019

# Key Plaza Features

- Gathering & Event Spaces
- Arboretum Walk & Signs
- Children's Garden
- Rainwater Catchment System
- Heritage Elements



# Construction Update and Plaza Name

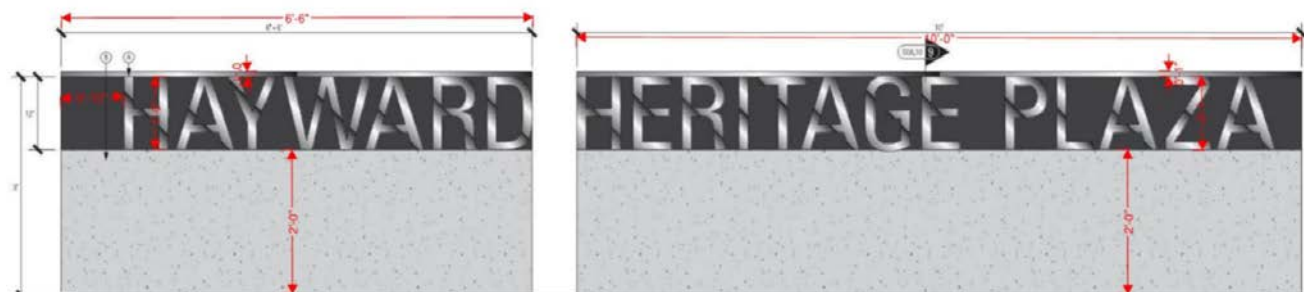


## Construction Update

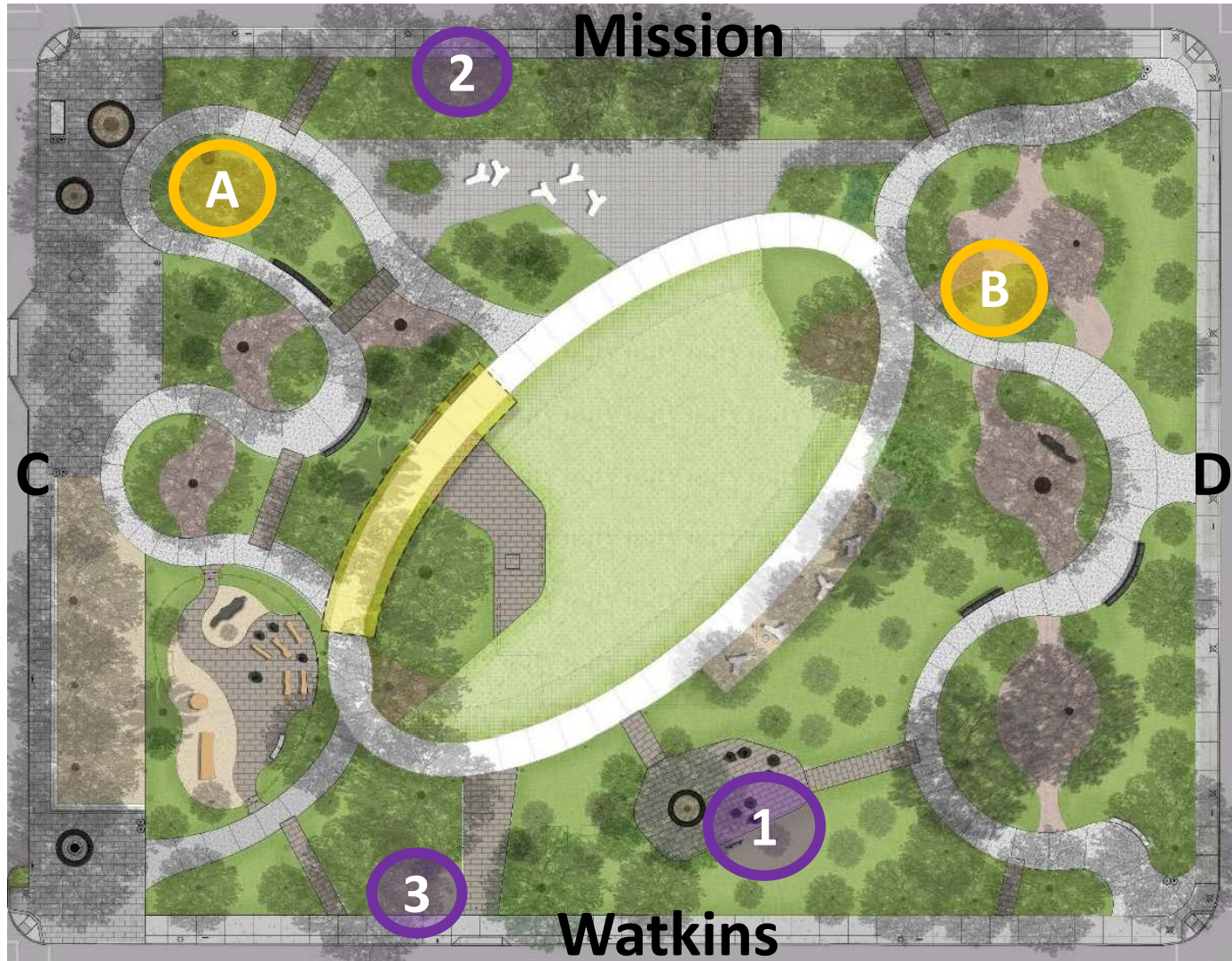
- Deconstruction and rainwater catchment cistern complete
- Working on utilities, curb, gutter, sidewalks, and other amenities
- Anticipated completion fall 2019

## Plaza Name

- Confirmation: “Heritage Plaza”
- Sign will match Library signs



# Proposed Plaza Heritage Features



## Confirmed Locations

1. Japanese-American Internment Memorial
2. El Camino Real Bell and Sign
3. Historic Terminus of the Railroad Marker

## Potential Locations

- A. Tribute to Native Yrgin and other Local Indigenous Peoples
- B. Tribute to Russell City

# Japanese-American Internment Memorial Sign

C. E. Order 34

WESTERN DEFENSE COMMAND AND FOURTH ARMY  
WARTIME CIVIL CONTROL ADMINISTRATION  
Presidio of San Francisco, California

## INSTRUCTIONS TO ALL PERSONS OF JAPANESE ANCESTRY

### LIVING IN THE FOLLOWING AREA:

All of that portion of the County of Alameda, State of California, within the boundary beginning at the point where the southerly limits of the City of Oakland meet San Francisco Bay; thence easterly and following the southerly limits of said city to U. S. Highway No. 50; thence southerly and easterly on said Highway No. 50 to its intersection with California State Highway No. 21; thence southerly on said Highway No. 21 to its intersection, at or near Warm Springs, with California State Highway No. 17; thence southerly on said Highway No. 17 to the Alameda-Santa Clara County line; thence westerly and following said county line to San Francisco Bay; thence northerly, and following the shoreline of San Francisco Bay to the point of beginning.

Pursuant to the provisions of Civilian Exclusion Order No. 34, this Headquarters, dated May 3, 1942, all persons of Japanese ancestry, both alien and non-alien, will be evacuated from the above area by 12 o'clock noon, P.W.T., Saturday, May 9, 1942.

No Japanese person living in the above area will be permitted to change residence after 12 o'clock noon, P.W.T., Sunday, May 3, 1942, without obtaining special permission from the representative of the Commanding General, Northern California Sector, at the Civil Control Station located at:

920 - "C" Street,  
Hayward, California.

Such permits will only be granted for the purpose of uniting members of a family, or in cases of grave emergency.

The Civil Control Station is equipped to assist the Japanese population affected by this evacuation in the following ways:

1. Give advice and instructions on the evacuation.
2. Provide services with respect to the management, leasing, sale, storage or other disposition of most kinds of property, such as real estate, business and professional equipment, household goods, boats, automobiles and livestock.



On May 8, 1942, more than 600 people of Japanese ancestry boarded buses on Watkins Street bound for a detention center at the Tanforan racetrack...



# Heritage Elements

## **Native Yrgin and Other Indigenous Peoples Tribute**

- Staff is working with representatives from Indigenous groups and history faculty at Chabot College
- Potential Indigenous artist identified for an interpretive art piece
- Anticipated installation summer 2020

## **Russel City Tribute**

- Staff is identifying the appropriate steering group to oversee creation of an art piece and sign
- Anticipated installation summer 2020

---

# Council Discussion

---

- Confirm Plaza Name
- Process for creating heritage features
- Location of heritage features
- Resolution to appropriate \$30,000 for heritage features