

HAYWARD EXECUTIVE AIRPORT (HWD)			
ATIS	126.70	NORCAL	125.65
	(510) 786-3988	CLNC DEL	128.05
HWD TWR	120.20	OAK TWR	127.20
HWD GND	121.40	OAK FSS	122.50
UNICOM	122.95	NOISE INFO	122.85

LEGEND	
	Noise-Sensitive Areas (Avoid Overflight)
	Noise Monitor Site
	Touch-n-go Traffic Pattern
	Preferred Departure Path
	Helicopter Operations
	Oakland International Airport Runway 29 Arrival Path
	Oakland Class C Inner Surface
	TPA Traffic Pattern Altitude (MSL)
	Airport Property Line

**Caution: Not for navigational use**

# HAYWARD EXECUTIVE AIRPORT

## Noise Abatement and Operational Procedure Guide

### Runway 10L

- Closed 2100 to 0700 local hours

### Runway 28R

- Closed 2100 to 0700 local hours
- No straight-out departures
- Turn right before golf course
- Single-engine aircraft operations only
- High performance single aircraft operations prohibited

### Runway 28L

- Request a left 270° turn to the North instead of a right 90° turn to the North on departure (see chart)
- No straight-out departures
- Preferred runway for Touch & Go and Stop & Go activities
- Depart from Taxiway A1 or Z1 blast fence

### Helicopter Operations

- All operations shall be conducted from Helipad or Spot Charlie
- Maintain traffic pattern over industrial area southeast of Runway 10R-28L at or below 500' MSL
- Use Spot Charlie for autorotation and landing training

### Touch & Go and Stop & Go Operations

- **Runway 10R-28L**
  - Touch & Go and Stop & Go procedures prohibited between 2100 and 0700 hours Monday through Saturday and 2100 hours and 1000 hours on Sundays and/or holidays
- **Runway 10L-28R**
  - Touch & Go and Stop & Go procedures prohibited between 0700 and 1000 hours on Sundays and/or holidays
  - All other times not recommended

Please avoid prolonged flight at low altitudes over NOISE SENSITIVE AREAS (shaded in yellow), unless prevented by weather, air traffic control instructions or safety reasons.

**RUSSELL CITY ENERGY CENTER**  
**USE CAUTION BELOW 1000 FT MSL**  
 • 200° and 1.600 nm from HWD Airport  
 • 142° and 6.992 nm from OAK VORTAC (116.8)  
 • 37° 38' 2.41" N  
 • 122° 08' 0.52" W



T  
SFC

OAKLAND  
CLASS C AIRSPACE

TPA 850'

WEST A STREET

INTERSTATE HIGHWAY 880

SPOT CHARLIE

HELIPAD

TPA 550'

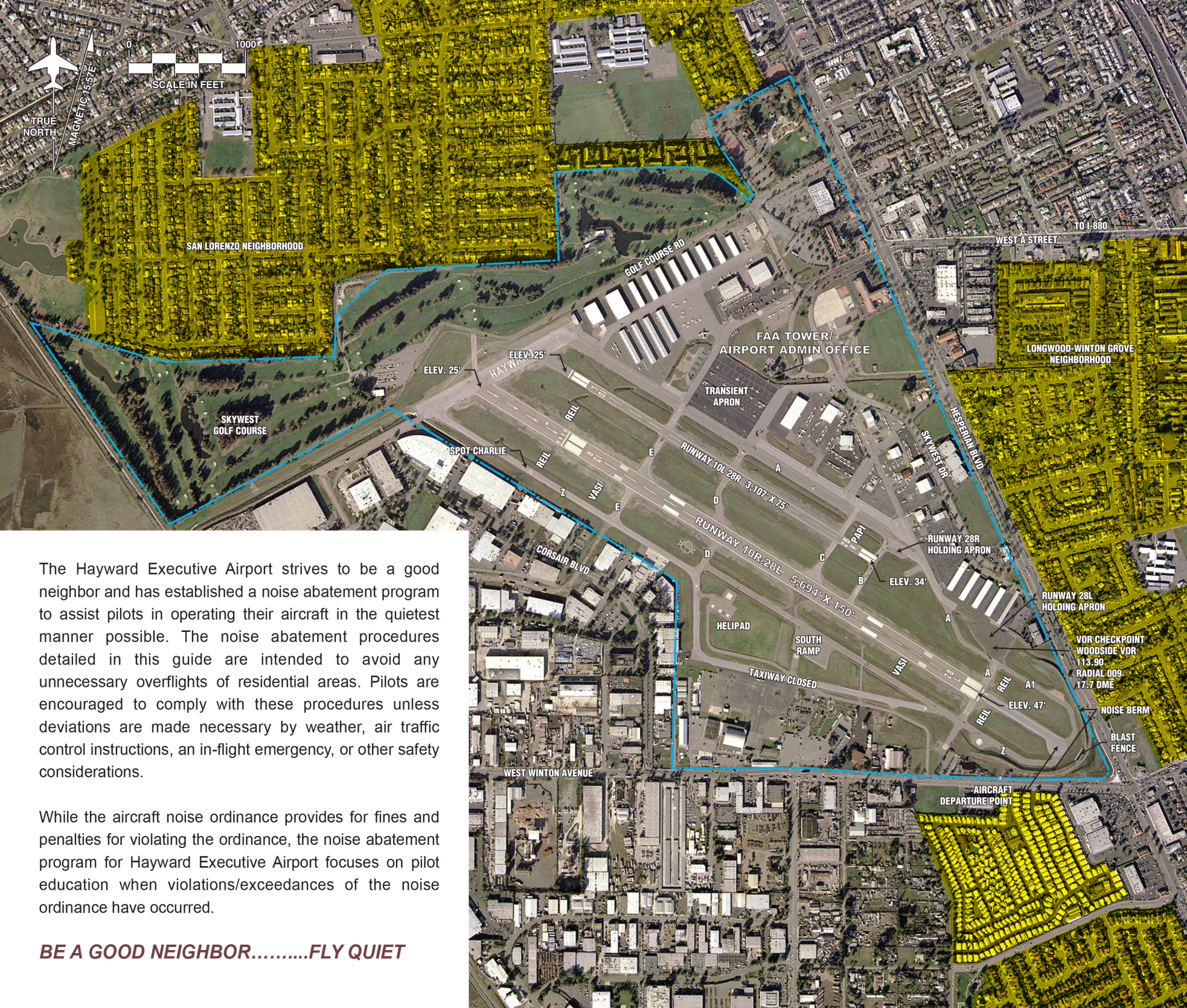
AIRCRAFT  
DEPARTURE POINT

SOUTHLAND  
MALL

TPA 650'

HESPERIAN BLVD

HIGHWAY 92



The Hayward Executive Airport strives to be a good neighbor and has established a noise abatement program to assist pilots in operating their aircraft in the quietest manner possible. The noise abatement procedures detailed in this guide are intended to avoid any unnecessary overflights of residential areas. Pilots are encouraged to comply with these procedures unless deviations are made necessary by weather, air traffic control instructions, an in-flight emergency, or other safety considerations.

While the aircraft noise ordinance provides for fines and penalties for violating the ordinance, the noise abatement program for Hayward Executive Airport focuses on pilot education when violations/exceedances of the noise ordinance have occurred.

**BE A GOOD NEIGHBOR.....FLY QUIET**

## FREQUENTLY REQUESTED NUMBERS

Hayward Airport Toll Free Number (CA)	(800) 286-5444
Hayward Airport Security- After Hours	(510) 385-1104
Hayward City Hall	(510) 583-4000
ASOS Lighting Mx	(800) 242-8194
ATIS (Automated Terminal Information System)	(510) 786-3988
East Bay Regional Park District (Police Helicopter)	(510) 544-3010
- Public Safety Headquarters 24-Hr	(510) 881-1833
FAA CONTROL TOWER - OAK (FAA FSDO)	(510) 748-0122
National Weather Service, (Monterey)	(831) 656-1725
Noise Information Hot Line- Hayward Airport	(510) 293-8692
Noise Complaint Line - Oakland Airport	(510) 563-6463
NOTAMs (clearances & NOTAMS)	(877) 487-6867/fax (928)-772-4390
OAK FSS - Flight Plans & Weather	(800) 992-7433
OAK FSDO - Pilot Certification	(510) 748-0122/fax (510) 748-9559
Police Department (non-emergency)	(510) 293-7000
Skywest Golf Course	(510) 317-2300

### HOTELS

Best Western Inn - Hayward	(510) 785-8700
Days Inn - Hayward	(510) 670-0555
La Quinta Inn & Suites (Airport)	(510) 732-6300 / (800) 753-3757
Mainstay's Suites - Hayward	(510) 731-3571

### RESTAURANTS

Coco's Restaurant	(510) 782-5686
Rajah Indian Cuisine & Bar	(510) 264-9300
Skywest Restaurant	(510) 278-8811

### RENTAL CARS

Budget	(510) 733-9590
Enterprise	(510) 481-9900
Hertz	(510) 733-2771

### TAXI

Yellow Cab	(510) 732-8500
Yellow Top Cab	(800) 681-4419
Veterans	(510) 537-3131

### BUS SERVICE

AC Transit (Alameda County Transit)	(510) 817-1717
BART (Bay Area Rapid Transit)	(510) 441-2278 #3 for schedule

**FOR EMERGENCIES, CALL 911**

## HAYWARD EXECUTIVE AIRPORT

20301 Skywest Drive  
Hayward, CA 94541  
(510) 293-8678

[www.haywardairport.org](http://www.haywardairport.org)

Noise Information Hotline (510) 293-8692

May 2013