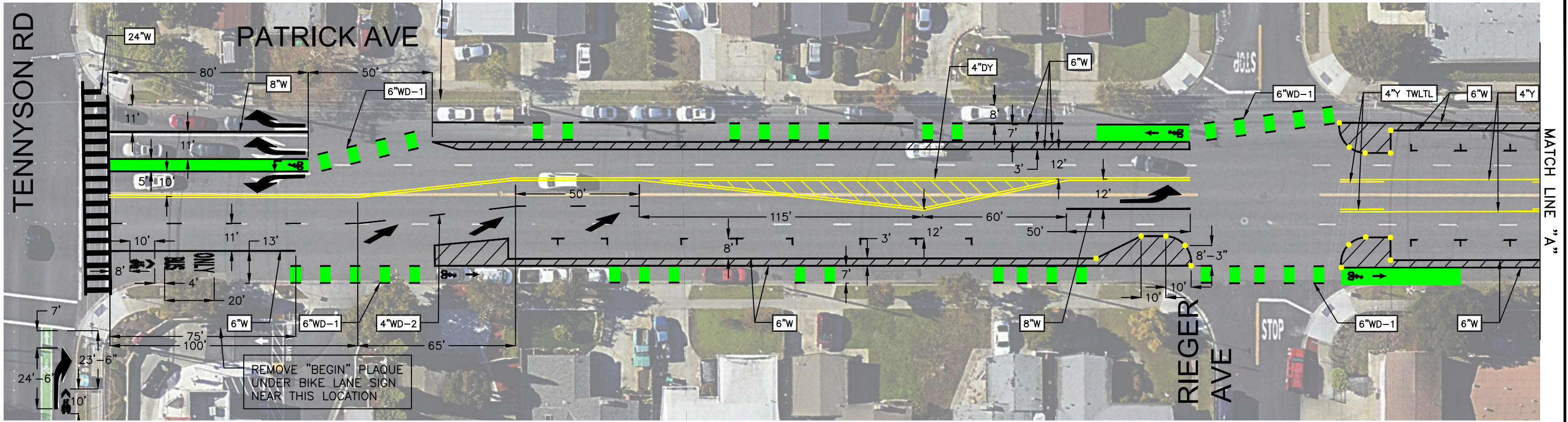


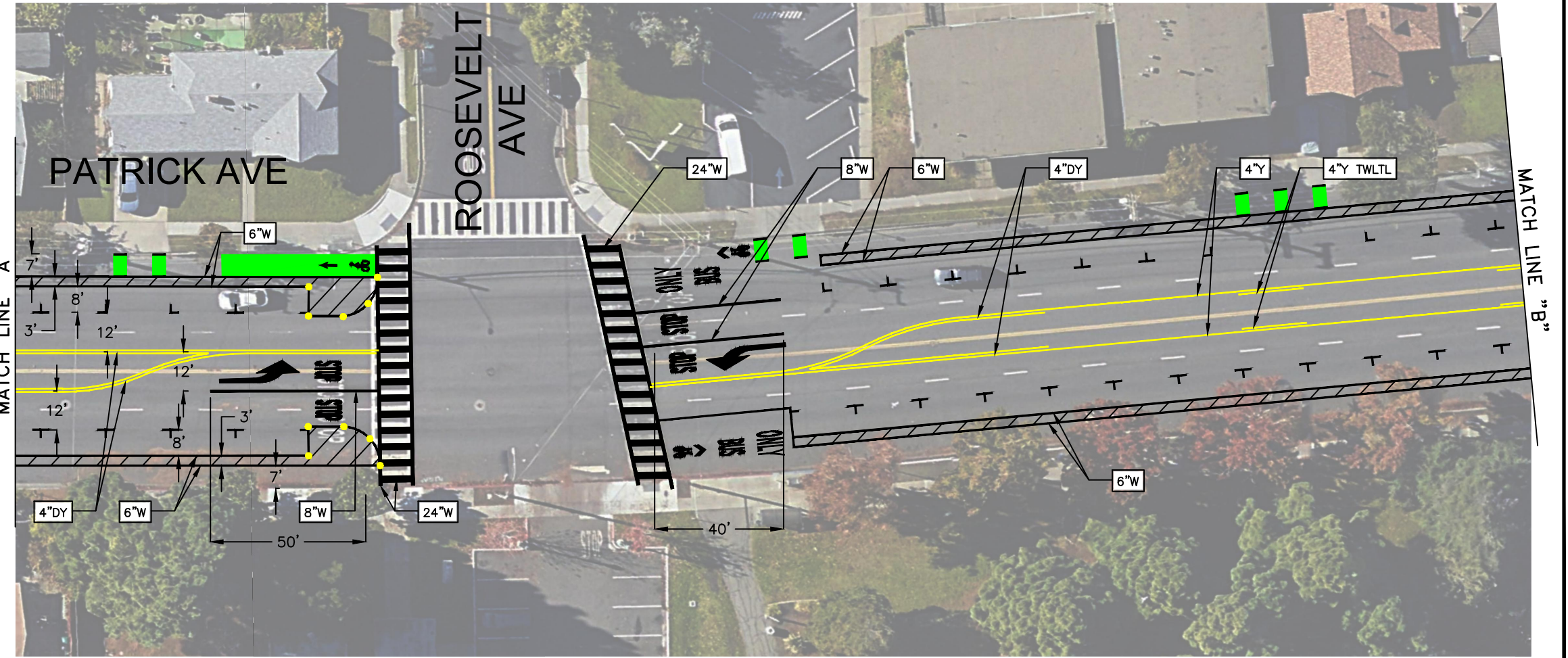
CITY	STREET	DATE	SHEET NO.	TOTAL SHEETS
HAYWARD, CA	PATRICK (TENNYSON TO ROOSEVELT)	11/20	1	4



TRAFFIC MARKING KEY

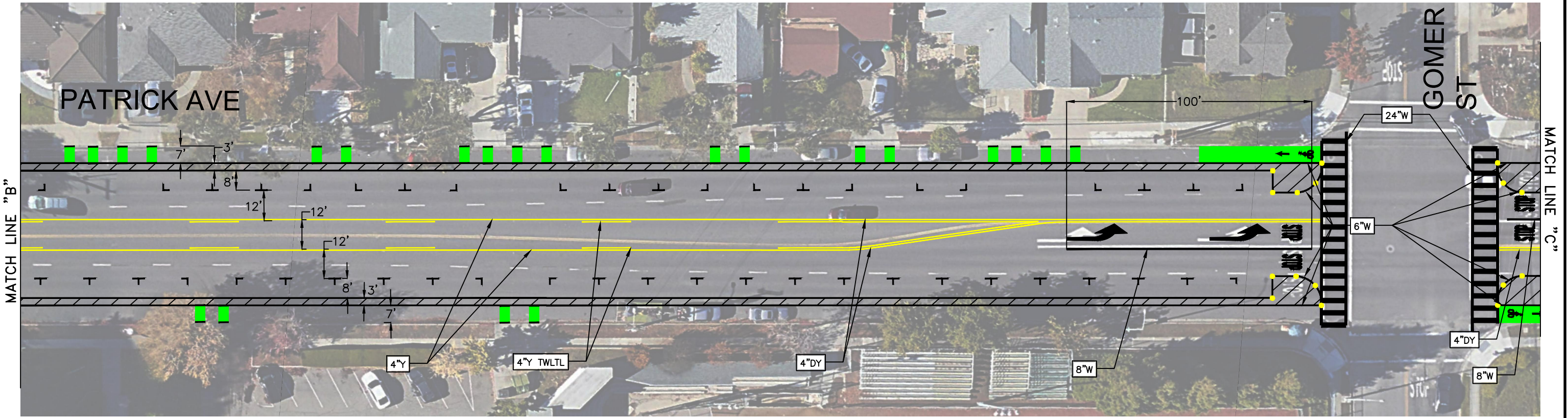
- 4"W 4" WHITE LINE
- 4"WD-1 4" WHITE DOTTED LINE (2' STRIPE/6' SKIP PATTERN)
- 4"WD-2 4" WHITE DOTTED LINE (3' STRIPE/9' SKIP PATTERN)
- 4"Y 4" YELLOW LINE
- 4"DY 4" DOUBLE YELLOW LINE
- 4"Y TWLTL 4" YELLOW TWO-WAY LEFT-TURN LANE STANDARD
- 6"W 6" WHITE LINE
- 6"WD-1 6" WHITE WIDE DOTTED LINE (4' STRIPE/8' SKIP PATTERN)
- 8"W 8" WHITE LINE
- 8"WD-1 8" WHITE WIDE DOTTED LINE (2' STRIPE/4' SKIP PATTERN)
- 24"W 24" WHITE LINE

NOTES:
 DIMENSIONS ARE TO CENTER OF STRIPE OR STRIPE GROUP.
 REMOVE CONFLICTING STRIPING THROUGHOUT.
 STOP BARS AND YIELD LINES ARE 4' MINIMUM AWAY FROM CROSSWALKS.
 INSTALL BIKE LANE CONFLICT STRIPING WITHIN CURB CUTS.
 INSTALL 6" WHITE 45° BUFFER STRIPING AT 5' SPACING AS SHOWN.
 NON-CONFLICT GREEN BIKE LANE AREAS ARE 50' IN LENGTH.
 NO-PARKING BUFFER AREAS ARE 20' X 9', FLEXIBLE DELINEATORS
 INSTALLED AT CORNERS OR AT 10' INTERVALS AWAY FROM CORNERS, AS
 SHOWN.
 PAVEMENT MARKINGS (BUS, ONLY, ARROWS, BIKE LANE SYMBOLS) ARE
 CENTERED TO THEIR LANE AND GENERALLY PLACED AT THE BEGINNINGS
 AND ENDS OF LANE EXTENTS, AS SHOWN.



H:\21\1775 - Hayward Bike Ped Plan Update\design\CD\Patrick Ave with Road Diet_Concept4A-1 Fri, Dec/04/20 11:46am

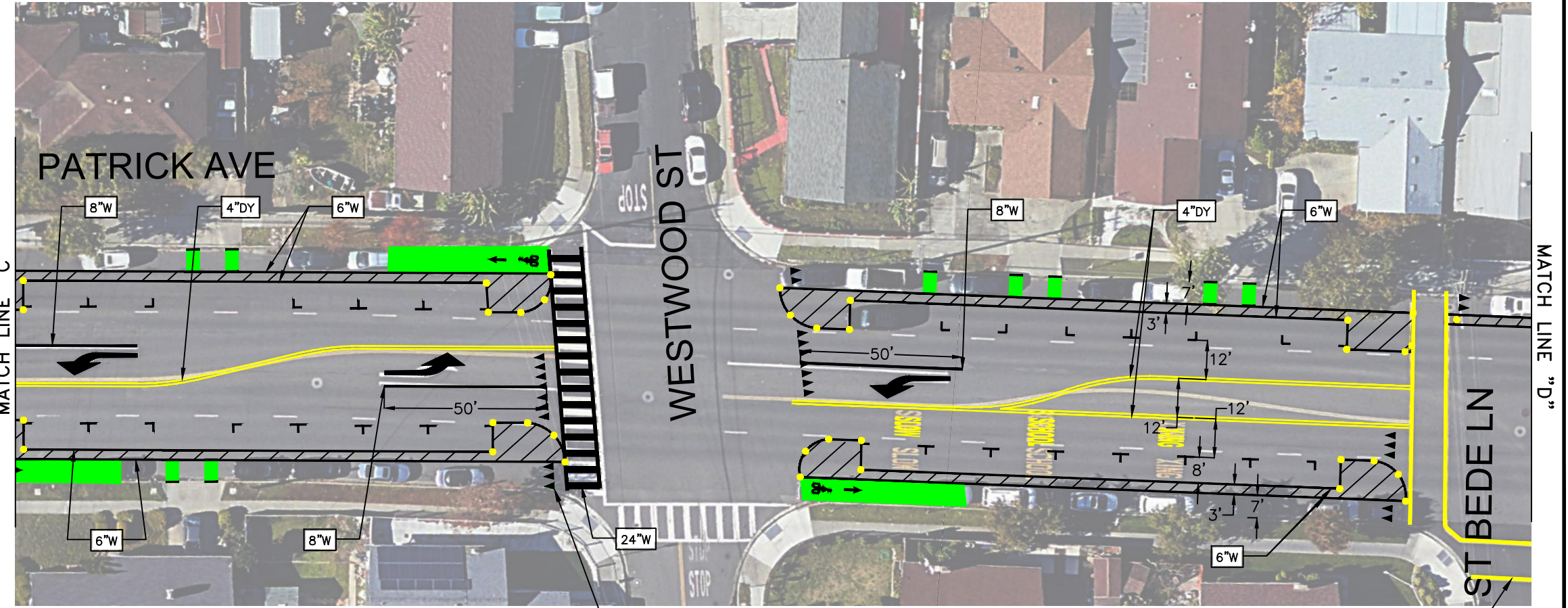
CITY	STREET	DATE	SHEET NO.	TOTAL SHEETS
HAYWARD, CA	PATRICK (ROOSEVELT TO ST. BEDE)	11/20	2	4



TRAFFIC MARKING KEY

- 4"W 4" WHITE LINE
- 4"WD-1 4" WHITE DOTTED LINE (2' STRIPE/6' SKIP PATTERN)
- 4"WD-2 4" WHITE DOTTED LINE (3' STRIPE/9' SKIP PATTERN)
- 4"Y 4" YELLOW LINE
- 4"DY 4" DOUBLE YELLOW LINE
- 4"Y TWLTL 4" YELLOW TWO-WAY LEFT-TURN LANE STANDARD
- 6"W 6" WHITE LINE
- 6"WD-1 6" WHITE WIDE DOTTED LINE (4' STRIPE/8' SKIP PATTERN)
- 8"W 8" WHITE LINE
- 8"WD-1 8" WHITE WIDE DOTTED LINE (2' STRIPE/4' SKIP PATTERN)
- 24"W 24" WHITE LINE

NOTES:
 DIMENSIONS ARE TO CENTER OF STRIPE OR STRIPE GROUP.
 REMOVE CONFLICTING STRIPING THROUGHOUT.
 STOP BARS AND YIELD LINES ARE 4' MINIMUM AWAY FROM CROSSWALKS.
 INSTALL BIKE LANE CONFLICT STRIPING WITHIN CURB CUTS.
 INSTALL 6" WHITE 45° BUFFER STRIPING AT 5' SPACING AS SHOWN.
 NON-CONFLICT GREEN BIKE LANE AREAS ARE 50' IN LENGTH.
 NO-PARKING BUFFER AREAS ARE 20' X 9', FLEXIBLE DELINEATORS
 INSTALLED AT CORNERS OR AT 10' INTERVALS AWAY FROM CORNERS, AS SHOWN.
 PAVEMENT MARKINGS (BUS, ONLY, ARROWS, BIKE LANE SYMBOLS) ARE
 CENTERED TO THEIR LANE AND GENERALLY PLACED AT THE BEGINNINGS
 AND ENDS OF LANE EXTENTS, AS SHOWN.

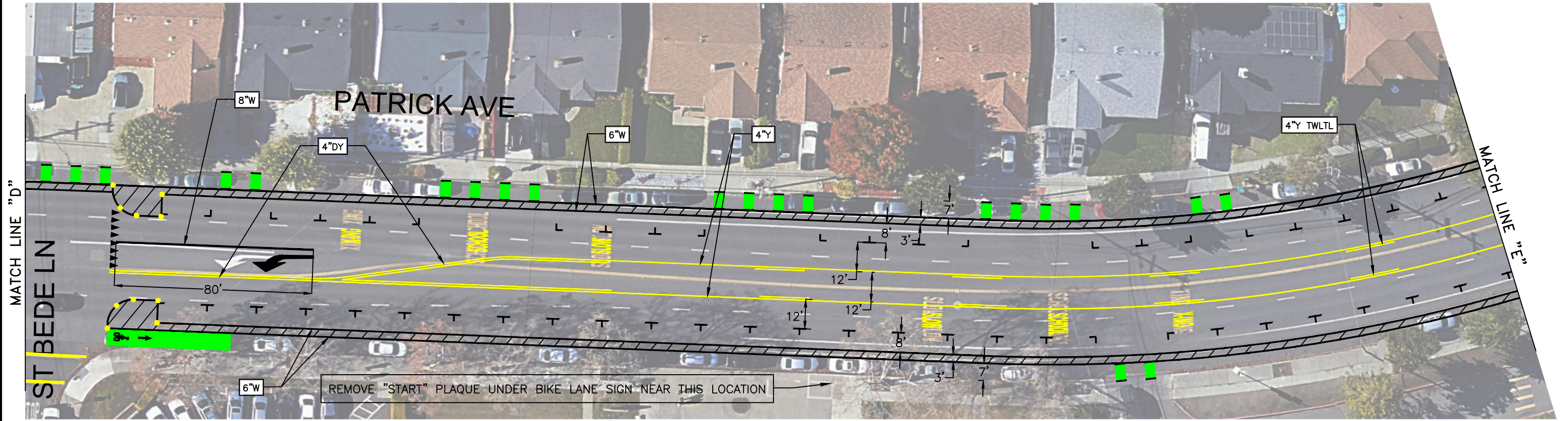


INSTALL R1-2, R1-5, OR R1-5a AT YIELD LINES (TYP.)

MATCH EXISTING SCHOOL CROSSING

C:\Users\kursor\AppData\Local\Temp\AcPublish_4952\Patrick Ave with Road Diet_Concept4A-2 Fri, Dec/04/20 11:47am

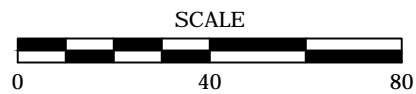
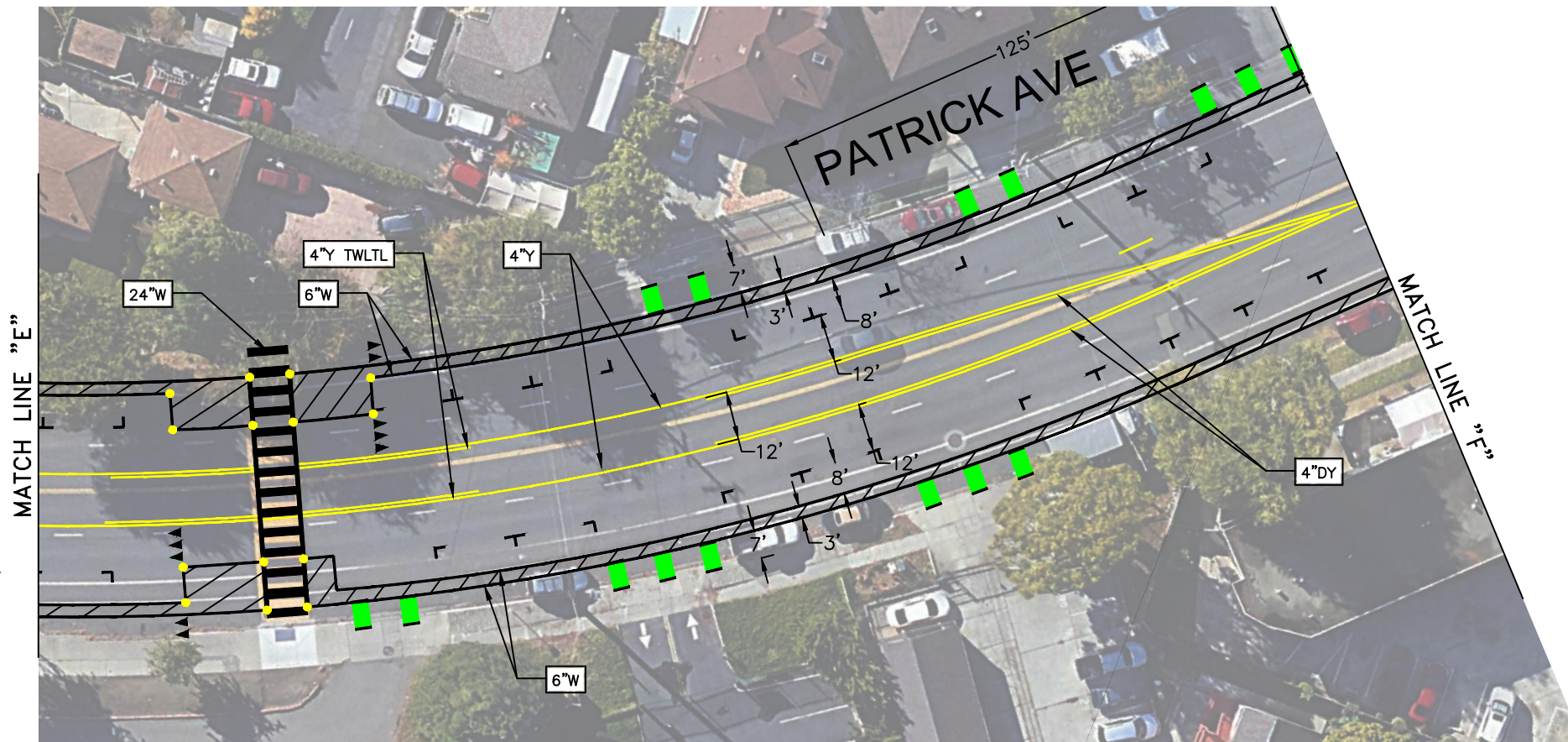
CITY	STREET	DATE	SHEET NO.	TOTAL SHEETS
HAYWARD, CA	PATRICK (ST. BEDE TO 27000 BLOCK)	11/20	3	4



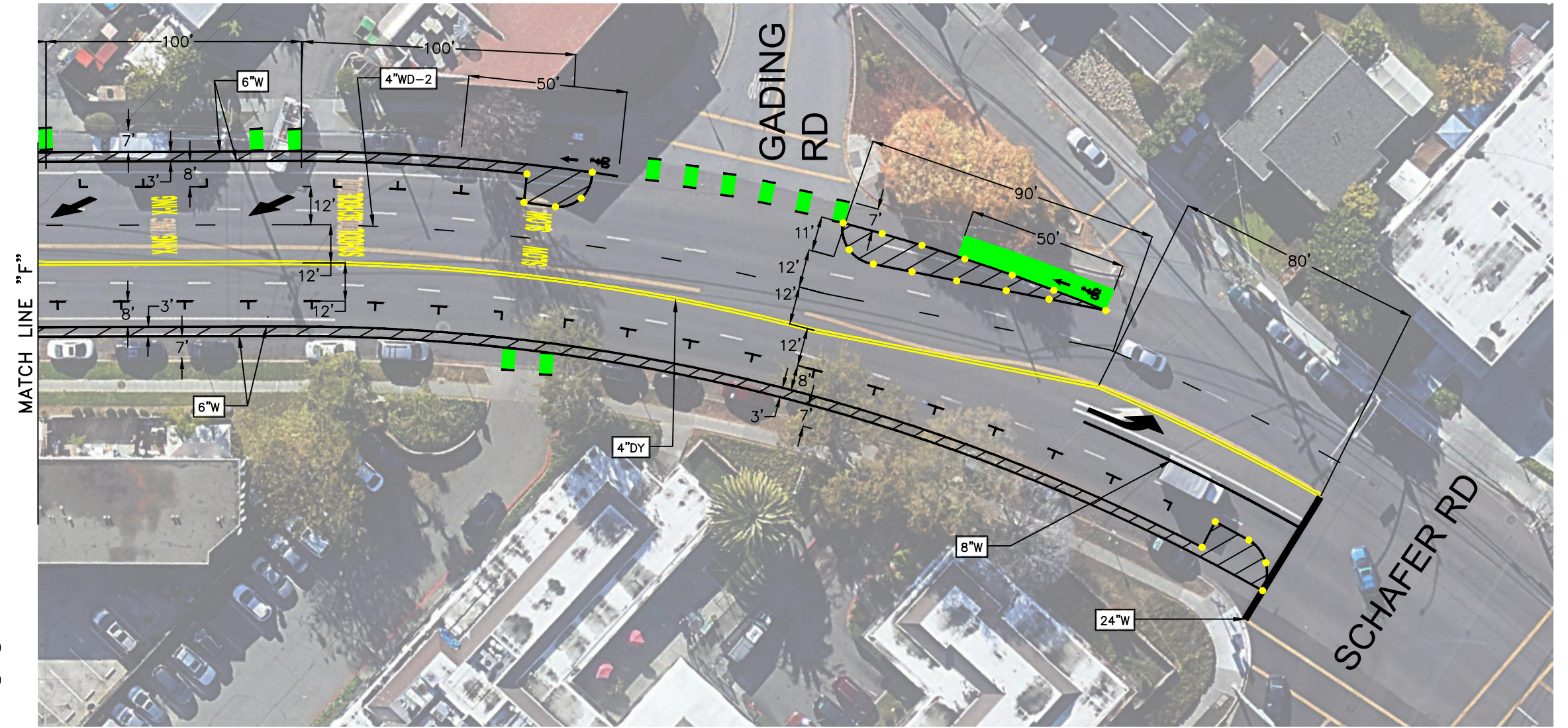
TRAFFIC MARKING KEY

- 4"W 4" WHITE LINE
- 4"WD-1 4" WHITE DOTTED LINE (2' STRIPE/6' SKIP PATTERN)
- 4"WD-2 4" WHITE DOTTED LINE (3' STRIPE/9' SKIP PATTERN)
- 4"Y 4" YELLOW LINE
- 4"DY 4" DOUBLE YELLOW LINE
- 4"Y TWLTL 4" YELLOW TWO-WAY LEFT-TURN LANE STANDARD
- 6"W 6" WHITE LINE
- 6"WD-1 6" WHITE WIDE DOTTED LINE (4' STRIPE/8' SKIP PATTERN)
- 8"W 8" WHITE LINE
- 8"WD-1 8" WHITE WIDE DOTTED LINE (2' STRIPE/4' SKIP PATTERN)
- 24"W 24" WHITE LINE

NOTES:
 DIMENSIONS ARE TO CENTER OF STRIPE OR STRIPE GROUP.
 REMOVE CONFLICTING STRIPING THROUGHOUT.
 STOP BARS AND YIELD LINES ARE 4' MINIMUM AWAY FROM CROSSWALKS.
 INSTALL BIKE LANE CONFLICT STRIPING WITHIN CURB CUTS.
 INSTALL 6" WHITE 45° BUFFER STRIPING AT 5' SPACING AS SHOWN.
 NON-CONFLICT GREEN BIKE LANE AREAS ARE 50' IN LENGTH.
 NO-PARKING BUFFER AREAS ARE 20' X 9', FLEXIBLE DELINEATORS
 INSTALLED AT CORNERS OR AT 10' INTERVALS AWAY FROM CORNERS, AS SHOWN.
 PAVEMENT MARKINGS (BUS, ONLY, ARROWS, BIKE LANE SYMBOLS) ARE
 CENTERED TO THEIR LANE AND GENERALLY PLACED AT THE BEGINNINGS
 AND ENDS OF LANE EXTENTS, AS SHOWN.



CITY	STREET	DATE	SHEET NO.	TOTAL SHEETS
HAYWARD, CA	PATRICK (27000 BLOCK TO SCHAFFER)	11/20	4	4



TRAFFIC MARKING KEY

- 4"W 4" WHITE LINE
- 4"WD-1 4" WHITE DOTTED LINE (2' STRIPE/6' SKIP PATTERN)
- 4"WD-2 4" WHITE DOTTED LINE (3' STRIPE/9' SKIP PATTERN)
- 4"Y 4" YELLOW LINE
- 4"DY 4" DOUBLE YELLOW LINE
- 4"Y TWLTL 4" YELLOW TWO-WAY LEFT-TURN LANE STANDARD
- 6"W 6" WHITE LINE
- 6"WD-1 6" WHITE WIDE DOTTED LINE (4' STRIPE/8' SKIP PATTERN)
- 8"W 8" WHITE LINE
- 8"WD-1 8" WHITE WIDE DOTTED LINE (2' STRIPE/4' SKIP PATTERN)
- 24"W 24" WHITE LINE

NOTES:
 DIMENSIONS ARE TO CENTER OF STRIPE OR STRIPE GROUP.
 REMOVE CONFLICTING STRIPING THROUGHOUT.
 STOP BARS AND YIELD LINES ARE 4' MINIMUM AWAY FROM CROSSWALKS.
 INSTALL BIKE LANE CONFLICT STRIPING WITHIN CURB CUTS.
 INSTALL 6" WHITE 45° BUFFER STRIPING AT 5' SPACING AS SHOWN.
 NON-CONFLICT GREEN BIKE LANE AREAS ARE 50' IN LENGTH.
 NO-PARKING BUFFER AREAS ARE 20' X 9', FLEXIBLE DELINEATORS
 INSTALLED AT CORNERS OR AT 10' INTERVALS AWAY FROM CORNERS, AS SHOWN.
 PAVEMENT MARKINGS (BUS, ONLY, ARROWS, BIKE LANE SYMBOLS) ARE CENTERED TO THEIR LANE AND GENERALLY PLACED AT THE BEGINNINGS AND ENDS OF LANE EXTENTS, AS SHOWN.

